

Coffee corner



14 LONG

Prominently located on the corner of Long and Riebeeck Street in our central CBD.

COME INSIDE

- Experience 360 degree sea and mountain views
- Natural light
- Vibrant new finishes.
- With an edgy streetscape in line with modern urban design frameworks Including painted murals, geometric planters and retail spill outs.
- Open air balconies.

WHATS ON YOUR DOORSTEP

Grab a coffee, dine at some of the city's finest eateries and immerse yourself in art at Cape Town's first Thursday events.



Entrance Lobby



Balcony

KEY FEATURES

PHYSICAL ADDRESS
14 Long Street, Cape Town

GROSS LETTABLE AREA (GLA)
10,893m²

FLOOR PLATE
Lower Floor – 1415m²
Upper Floor – 980m²

RETAIL AREA
982m²

OFFICE AREA
9,911m²

PARKING TO RENT
120 Bays

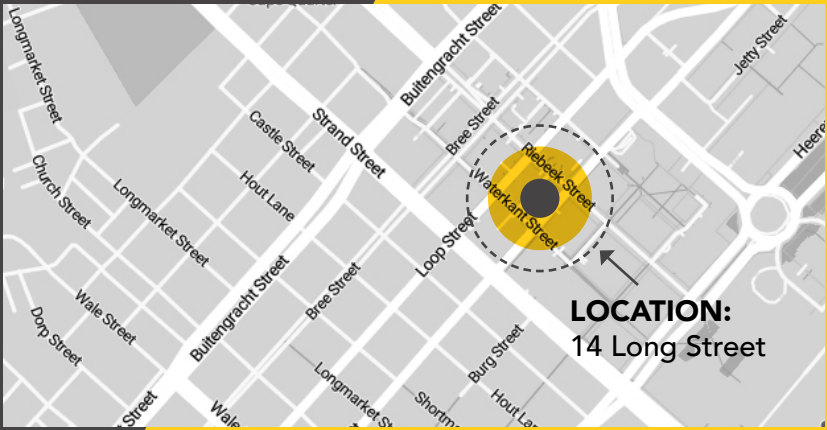
EMERGENCY POWER SUPPLY AVAILABLE

CENTRAL LOCATION
within CBD and 400m from transports hubs

4* GREEN BUILDING

4 PASSENGER LIFTS

OPEN AIR BALCONIES

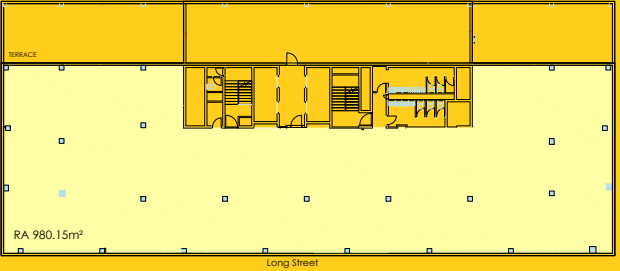


BASIC FLOOR PLAN

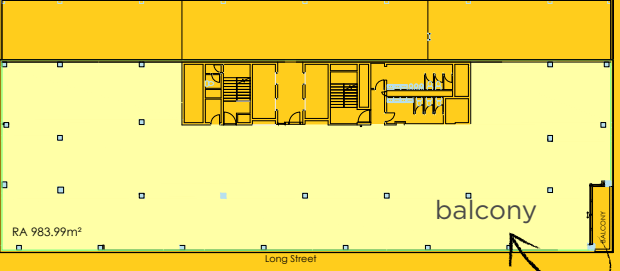
FLOORS 1-4 1 415.49m²



FLOOR 5 980.15m²



FLOORS 6-8 983.99m²





For more information contact
063 111 9898

 www.boxwoodproperty.co.za

 [@boxwoodpropertyfund](https://www.facebook.com/boxwoodpropertyfund)

 [boxwoodpropertyfund](https://www.instagram.com/boxwoodpropertyfund)



BOXWOOD
PROPERTY FUND

BOXWOOD PROPERTY FUND

30th Floor, The Box, 9 Lower Burg Street, Cape Town, 8001
PO Box 3366, Cape Town, 8000
Reg No. 2000/026085/07

Scan for our
Website

