

LONG

Coffee corner



14 LONG

Prominently located on the corner of Long and Riebeeck Street in our central CBD.

COME INSIDE

- Experience 360 degree sea and mountain views
- Natural light
- Vibrant new finishes.
- With an edgy streetscape in line with modern urban design frameworks Including painted murals, geometric planters and retail spill outs.
- Open air balconies.

WHATS ON YOUR DOORSTEP

Grab a coffee, dine at some of the city's finest eateries and immerse yourself in art at Cape Town's first Thursday events.



KEY FEATURES



PHYSICAL ADDRESS

14 Long Street, Cape Town



GROSS LETTABLE AREA (GLA)

10,893m²



FLOOR PLATE

Lower Floor – 1,359m²
Upper Floor – 1003m²



RETAIL AREA

982m²



OFFICE AREA

9,911m²



PARKING TO RENT

130 Bays



NO LOAD SHEDDING



CENTRAL LOCATION

within CBD and 400m
from transports hubs



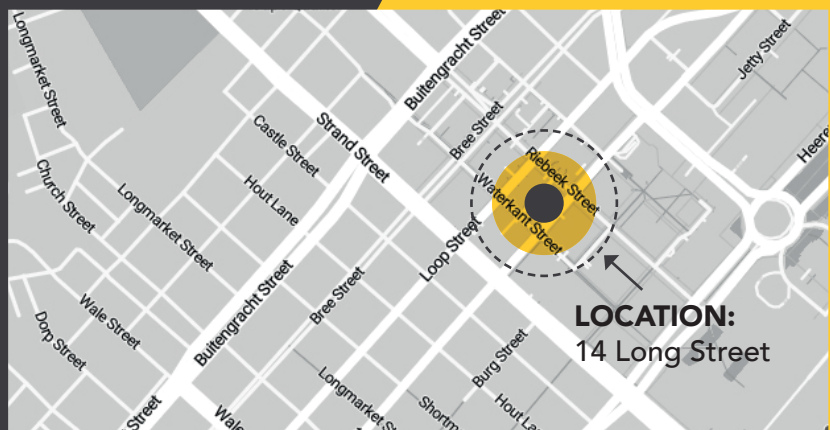
4* GREEN BUILDING



4 PASSENGER LIFTS

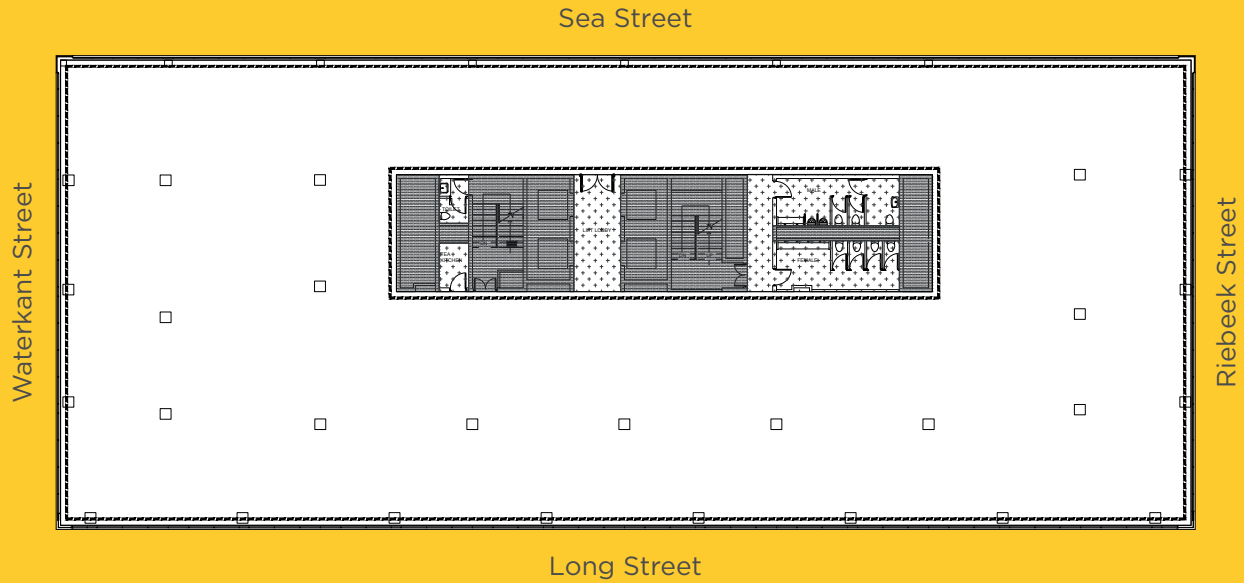


OPEN AIR BALCONIES

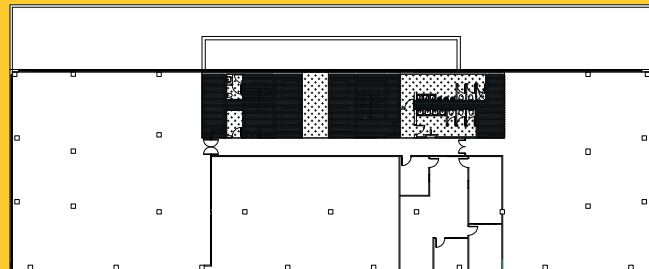
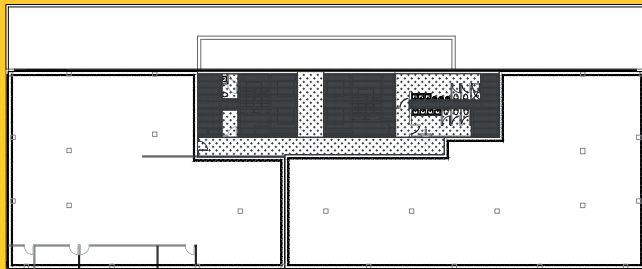


BASIC FLOOR PLAN

FLOORS 1-4 1 359m²



FLOORS 5-8 1 003m²



Lift lobby



Bathrooms





Reception Area

For more information contact
063 111 2323

 www.boxwoodproperty.co.za

 [@boxwoodpropertyfund](https://www.facebook.com/boxwoodpropertyfund)

 [boxwoodpropertyfund](https://www.instagram.com/boxwoodpropertyfund)



BOXWOOD
PROPERTY FUND

BOXWOOD PROPERTY FUND

30th Floor, The Box, 9 Lower Burg Street, Cape Town, 8001
PO Box 3366, Cape Town, 8000
Reg No. 2000/026085/07

Scan for our
Website

